

*Safety of staff and learners  
requires the school to  
implement management  
structures to prevent any  
liability.*

**Presented by: Paul Sauer**  
DATE: 16 APRIL 2021



**SAOU**

DIE VERANDERING IN ONDERWYS  
THE CHANGE IN EDUCATION



# LEGAL FRAMEWORK

WHERE DO I BEGIN?

The logo for SAOUI is located in the bottom right corner. It consists of the letters 'S', 'A', 'O', and 'U' in a bold, sans-serif font. The 'S' and 'U' are blue, while the 'A' and 'O' are yellow. To the left of the logo, there is a large, abstract graphic made of many white, three-dimensional geometric shapes (polyhedrons) of various sizes, some of which are overlapping and creating a sense of depth and movement. The entire graphic is set against a dark blue background that spans the width of the slide.

SAOUI

# LEGISLATIVE FRAMEWORK 1

Convention on the Rights of the Child

African Charter on the Rights and Welfare of the Child (200)

African Youth Charter

# LEGISLATIVE FRAMEWORK 2

South African Constitution

Child Justice Act

Children's Act

Liquor Act

National School Health Policy and Implementation Plan (2003)

National Development Plan



# LEGISLATIVE FRAMEWORK 3

- South African Schools Act
- National Education Policy Act
- Employment of Educators Act
- Regulations for Safety Measures at all Public Schools
- Regulations to Prohibit Initiation Practices in Schools
- Norms and Standards for Educators
- The Policy Framework for the Management of Drug Abuse by Learners in Schools and in Public FET institutions
- National Guidelines for the Management and Prevention of Drug Abuse in all Public Schools and FET Institutions
- The Devices to be used for Drug Testing and the Procedure to be followed
- Implementation protocol between DBE and SAPD on the prevention of crime and violence in all schools

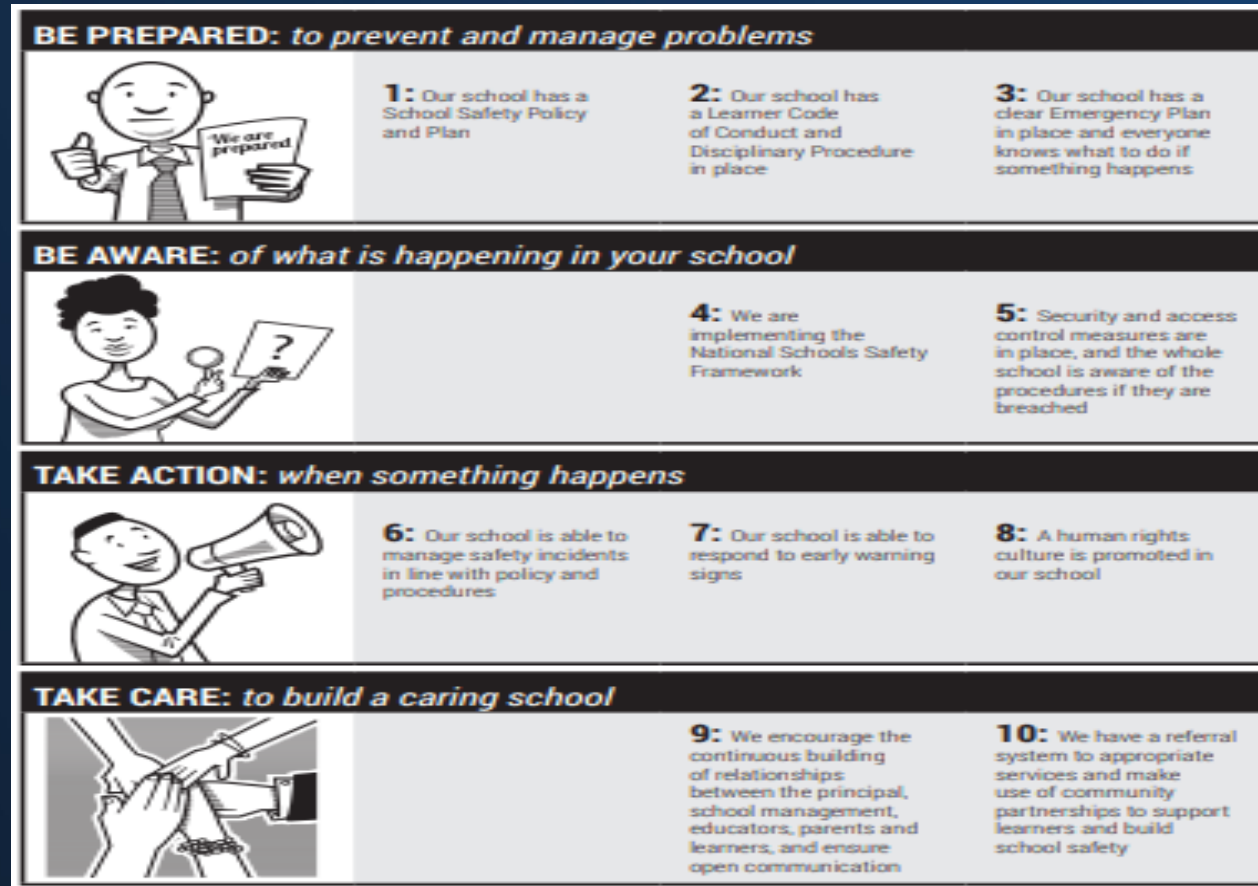


# SOLUTION 1



NATIONAL SCHOOL SAFETY FRAMEWORK

# NATIONAL SCHOOL SAFETY FRAMEWORK NSSF



Policies

NSSF and Access

Plan and  
Contingency plan

Take care of relationships  
and Evaluate systems

# SOLUTION 2

Review and update existing policies

Have a comprehensive safety and security policy that is guided by an active safety and security committee

Pay special attention to **Vehicles, Buildings, Swimming Pools, Trips, Camps, Tours and Medical Assistance**

# A GOOD INDEX TO COVER YOU IS THE FOLLOWING:

1. Emergency information chart
2. Organogram
3. Evacuation plan
4. Appointment letters
5. Minutes of meetings
6. Incident register
7. Instruments (tools) for evaluation
8. Staff training
9. Proof of evacuations
10. Correspondence

# A GOOD INDEX TO COVER YOU IS THE FOLLOWING:

11. School safety policy
12. School safety plan
- 13. Access policy**
14. School safety measures for learners and educators
15. National school safety framework
16. Code of conduct for learners **(includes bullying, homophobia, xenophobia, cyber-bullying)**
17. Code of conduct for teachers
18. Policy on Tuckshop and / food handlers

# A GOOD INDEX TO COVER YOU IS THE FOLLOWING:

- 20. Guidelines on prevention of sexual harassment**
- 21. Preventing crime and violence in schools
- 22. School safety and drugs
- 23. National school nutrition program
- 24. First Aid and Training
- 25. Fire equipment quality control registry**
- 26. Electrical certificate**

# MANAGEMENT STRUCTURES TO LIMIT LIABILITY

SGB SUBCOMMITTEE (VEHICLES, BUILDINGS, EQUIPMENT)

SAFETY AND SECURITY COMMITTEE

SCHOOL MANAGEMENT TEAM

EDUCATORS

ADMIN STAFF

CLEAR REPORTING LINES AND KEEP RECORD OF INSIDENCES

# ACKNOWLEDGEMENTS

Mr. Corrie van der Walt - School Safety, Motheo District, Free State

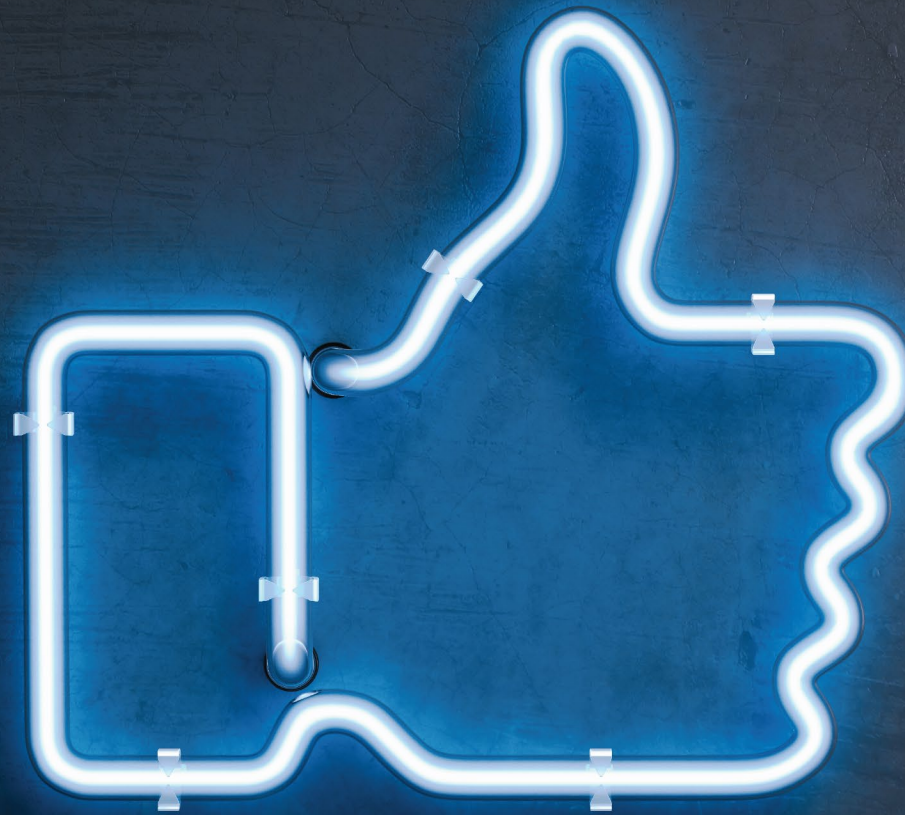
Mr. Gys Coetzee – Voortrekker High School, Bethlehem

Dr. Willie Stolk – Goudveld-Hoërskool, Welkom

DBE – National School Safety Framework (NSSF)

EC PED – Training on NSSF

# SAOU



012 023 1333



saou@saou.co.za



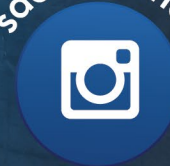
076 127 1921



SAOU National



saouteachers



SAOU YouTube

