

# PRACTICAL IMPLICATIONS of safety and security of school grounds/infrastructure



**PRESENTED BY: Fanie Botes**

DATE: 15 February 2022



DIE VERANDERING IN ONDERWYS  
THE CHANGE IN EDUCATION

**Practice good  
housekeeping**

**A place for everything  
and everything in its place**

## Introduction

- ✓ Infrastructure – your biggest asset, also your biggest risk
- ✓ Roles and responsibilities of the SGB
- ✓ Responsibilities of SMT and Staff
- ✓ Terrain manager
- ✓ Broken window theory
- ✓ Budgeting
- ✓ Safety and Security Committee





# Infrastructure your biggest asset, also your biggest risk

- Our building is 75 years old
- 9 hectares of land
- All sport facilities
- Agricultural Department
- Pavilions
- Ablution facilities
- No-go areas
- High Risk Areas

# Roles and responsibilities of the SGB

- **SWOT Analysis**
- **Budget**
- **Committees of the SGB**
- **Inspection of facilities**
- **Safety and Security Audit**



# Responsibilities of SMT and Staff

- Safety Officer
- Safety Committee
- Line Function
- Budget
- Head of Department –  
implications per subject
- Sport Manager
- Own area of influence

# Terrain Manager

- Hands on
- Daily meetings with Principal or delegates
- Feedback and control book
- Line function
- Budget
- Awareness of GA's

## The Broken Windows Theory



The broken windows theory, defined in 1982 by social scientists James Wilson and George Kelling, drawing on earlier research by Stanford University psychologist Philip Zimbardo, argues that no matter how rich or poor a neighborhood, one broken window would soon lead to many more windows being broken:

*"One unrepaired broken window is a signal that no one cares, and so breaking more windows costs nothing."*

U  
O  
A  
S



# Budgeting

- Quintile of the school
  - Incidental expenditure
  - Short Term Planning (SIP)
  - Long Term Planning (SDP)
  - Responsibilities of the Department of Education
  - Life threatening situations
- Driehoek**



HOëRSKOOL DRIEHOEK

# Safety and Security Committee

- **Functional**
- **Relevant members**
- **Knowledgeable**



# Must !

## Complete your projects



ceilings



grass

holes

trees





# Must !

## Complete your projects



**fences**

**crumbling  
floors**

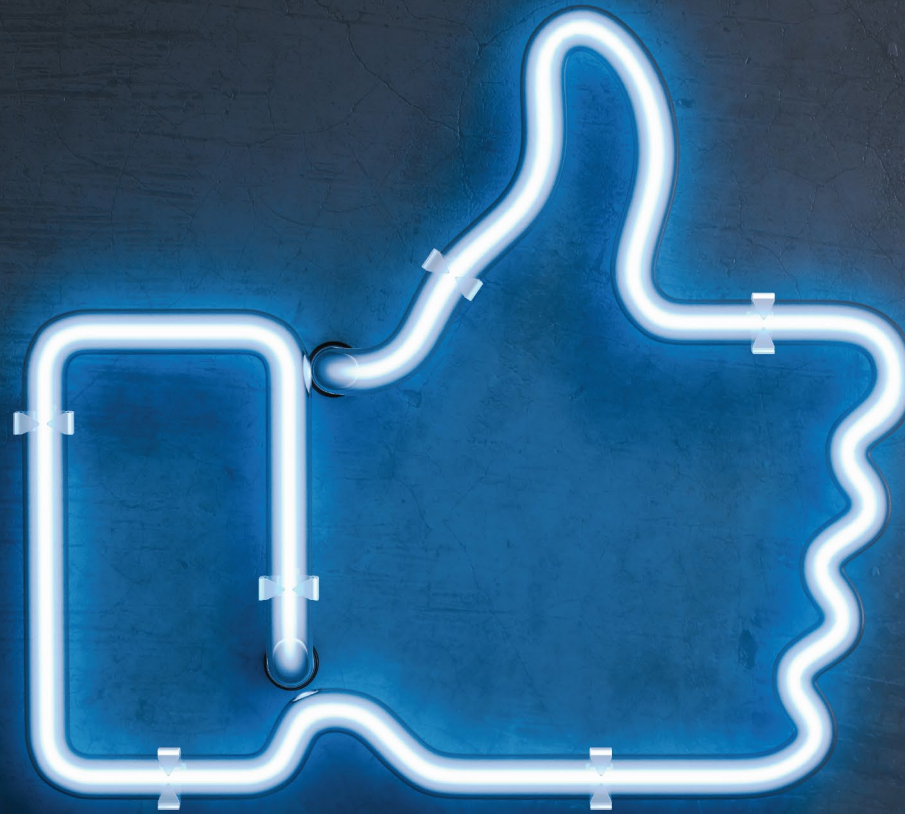


**obvious  
obstructions**





# SAOU



012 033 1333



saou@saou.co.za



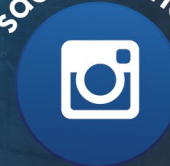
076 127 1921



SAOU National



saouteachers



SAOU YouTube

