

*How must the principal
overcome challenges in
times of disaster
management in order to still
achieve the school's vision*



PRESENTED BY: Hein Knoetze
DATE: 8 July 2021

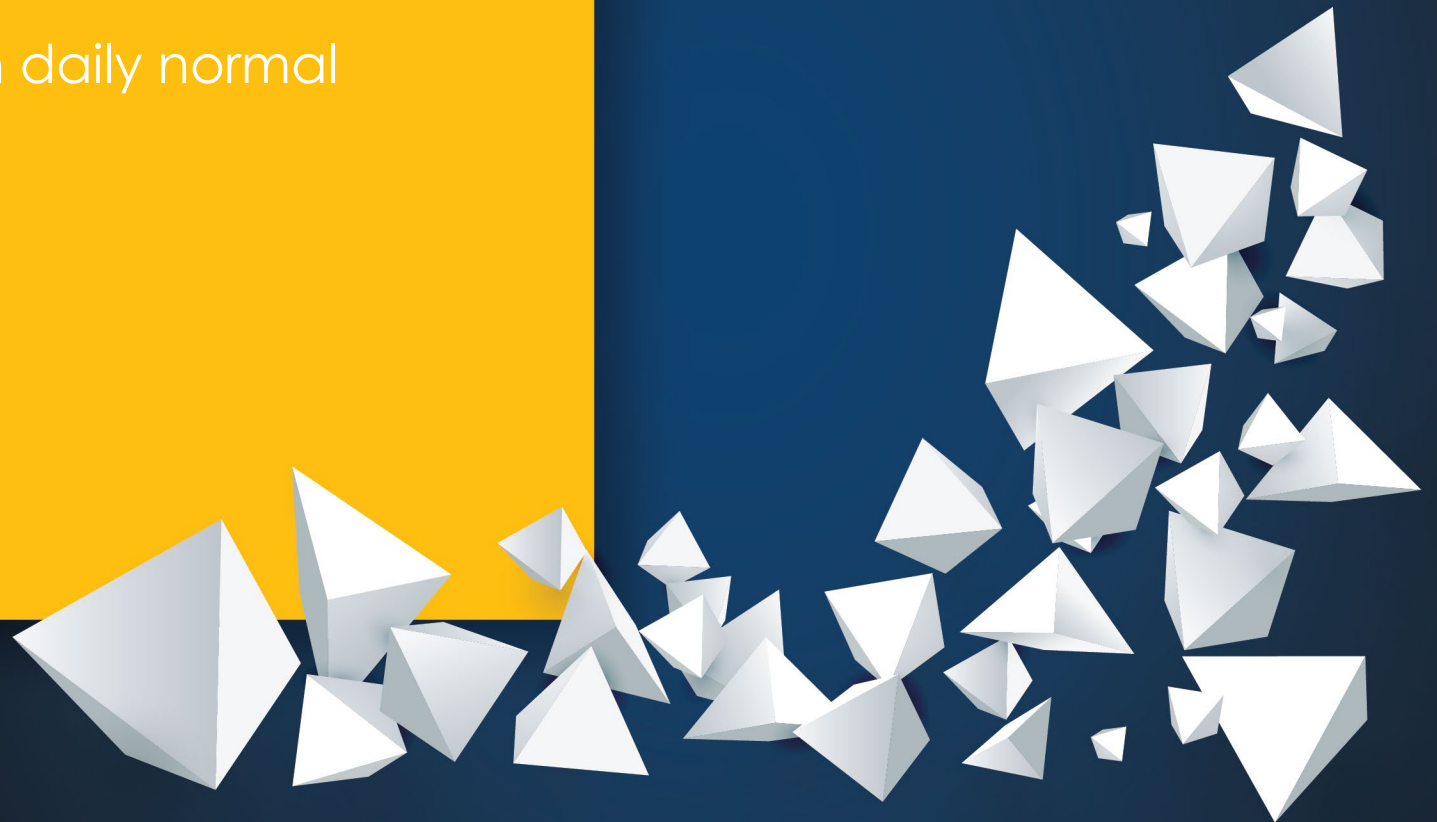
SAOU

DIE VERANDERING IN ONDERWYS
THE CHANGE IN EDUCATION

What is a disaster? *My*
definition.

School community

- ✓ Group needing consolation
- ✓ Group needing support
- ✓ Group to be supported in daily normal school needs



Stumbling blocks

- ✓ Magnifying glass
- ✓ Media- social and formal
- ✓ Telephone- personal and school
- ✓ Second disaster
- ✓ Atmosphere at school and in general
- ✓ Learning curve





Challenges

- ✓ Steep learning curve
- ✓ Trauma counselling
- ✓ Delegation

SAOD

What should be in place?

- ✓ Emergency plan
- ✓ Support network
- ✓ Relationships
- ✓ Networking
- ✓ Capable management team

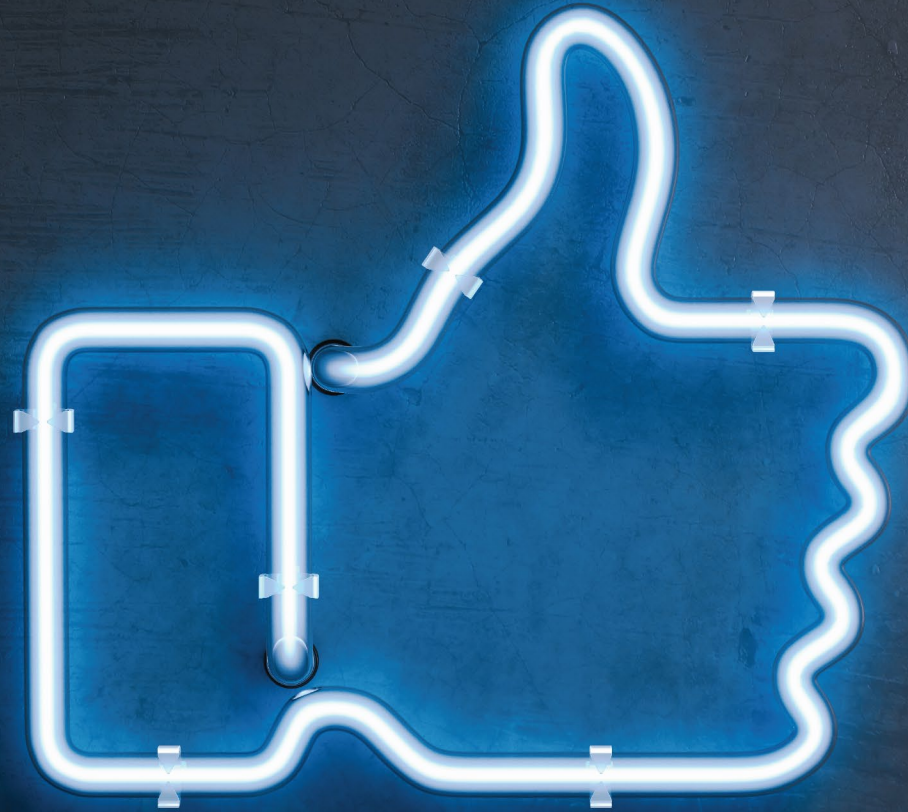
Most important

- ✓ You as headmaster being the rock
- ✓ Your health
- ✓ Father , Mother of the community
- ✓ Anchor of believe

Photo can be added here at the back, logo below is transparent....



SAOU



012 033 1333



saou@saou.co.za



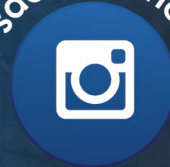
076 127 1921



SAOU National



saouteachers



SAOU YouTube

